

KULLANIM KILAVUZU

DAF Euro 5

9in-1 NOx Emülatör



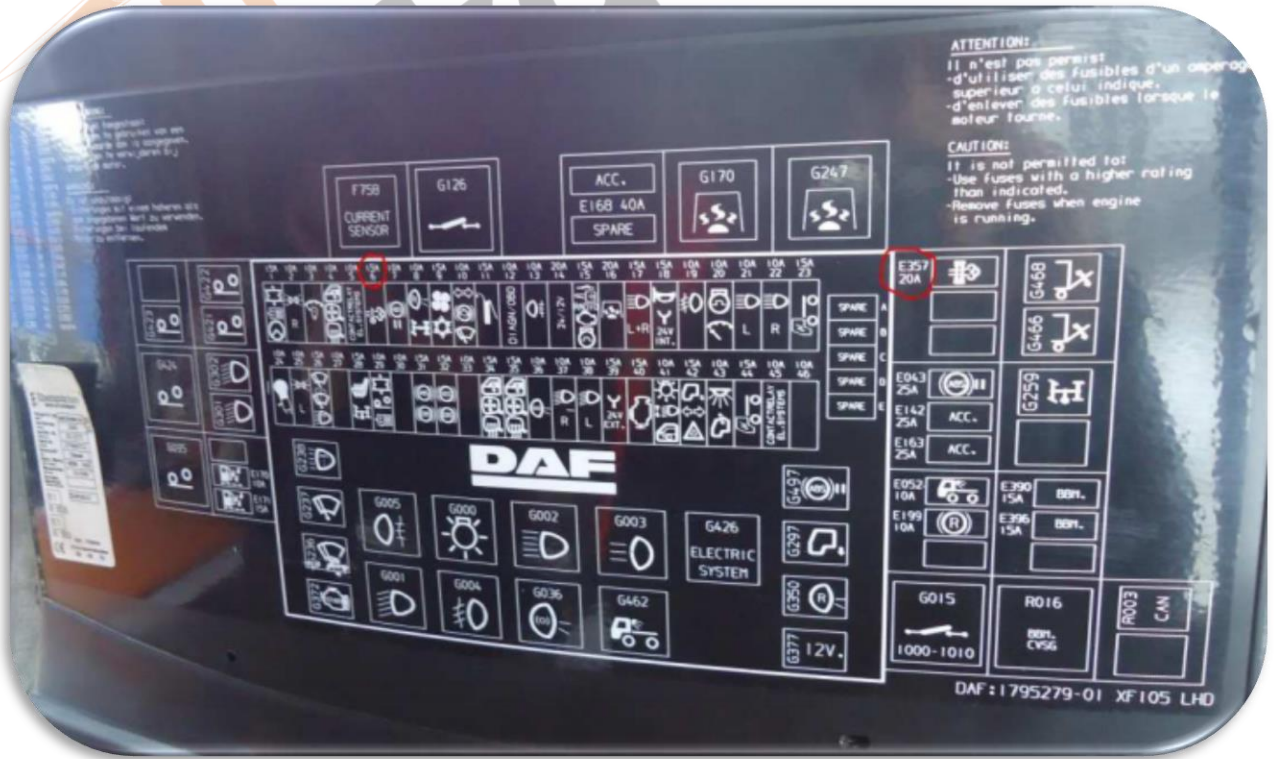
www.nitroibilisim.com.tr

+0850 755 0230

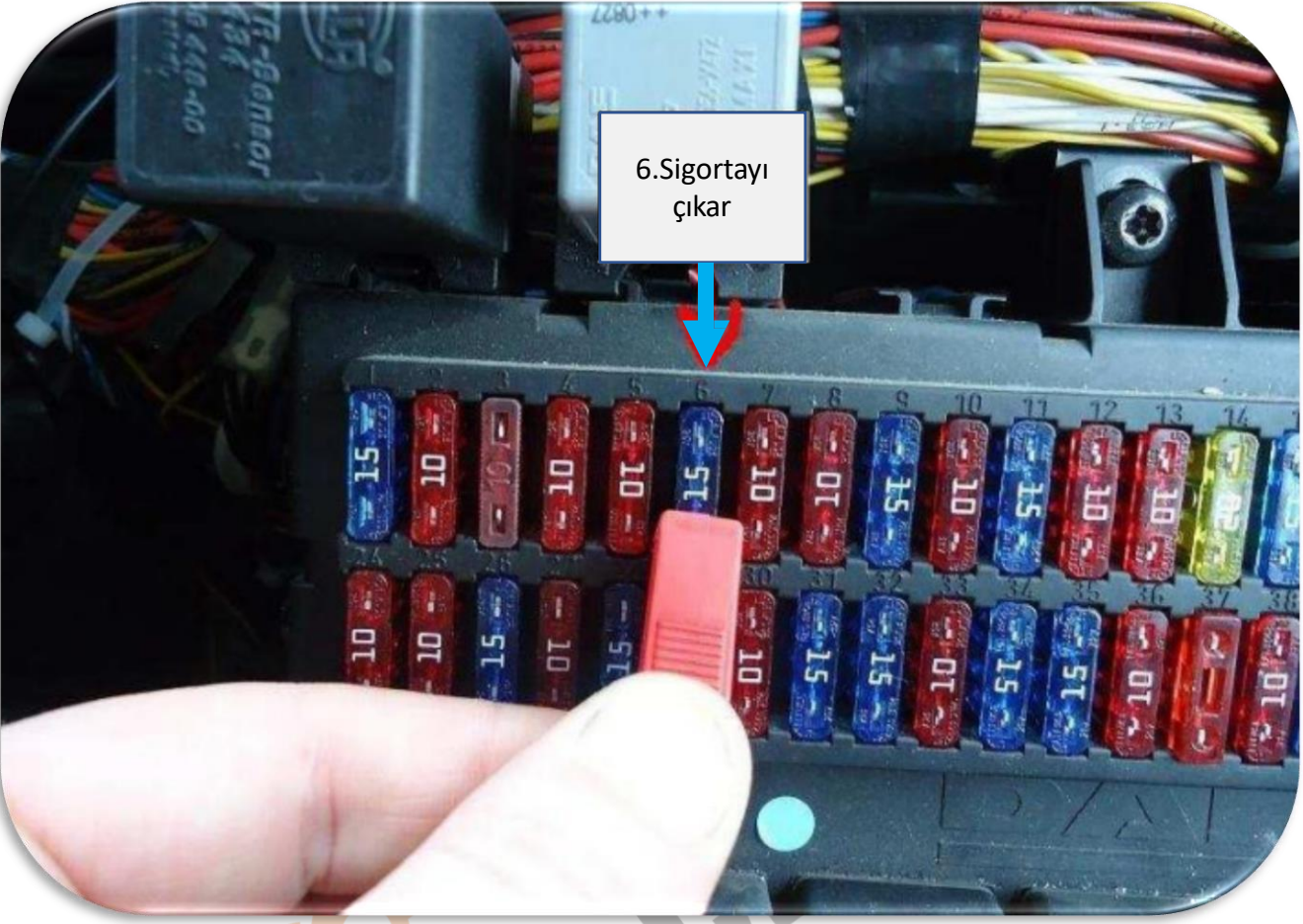
DAF Euro 5 9in-1 NOx Emülatör Bağlantı Şeması

DAF

		ON		
█				
█	█	█	█	
1	2	3	4	



6.Sigortayı
çıkar



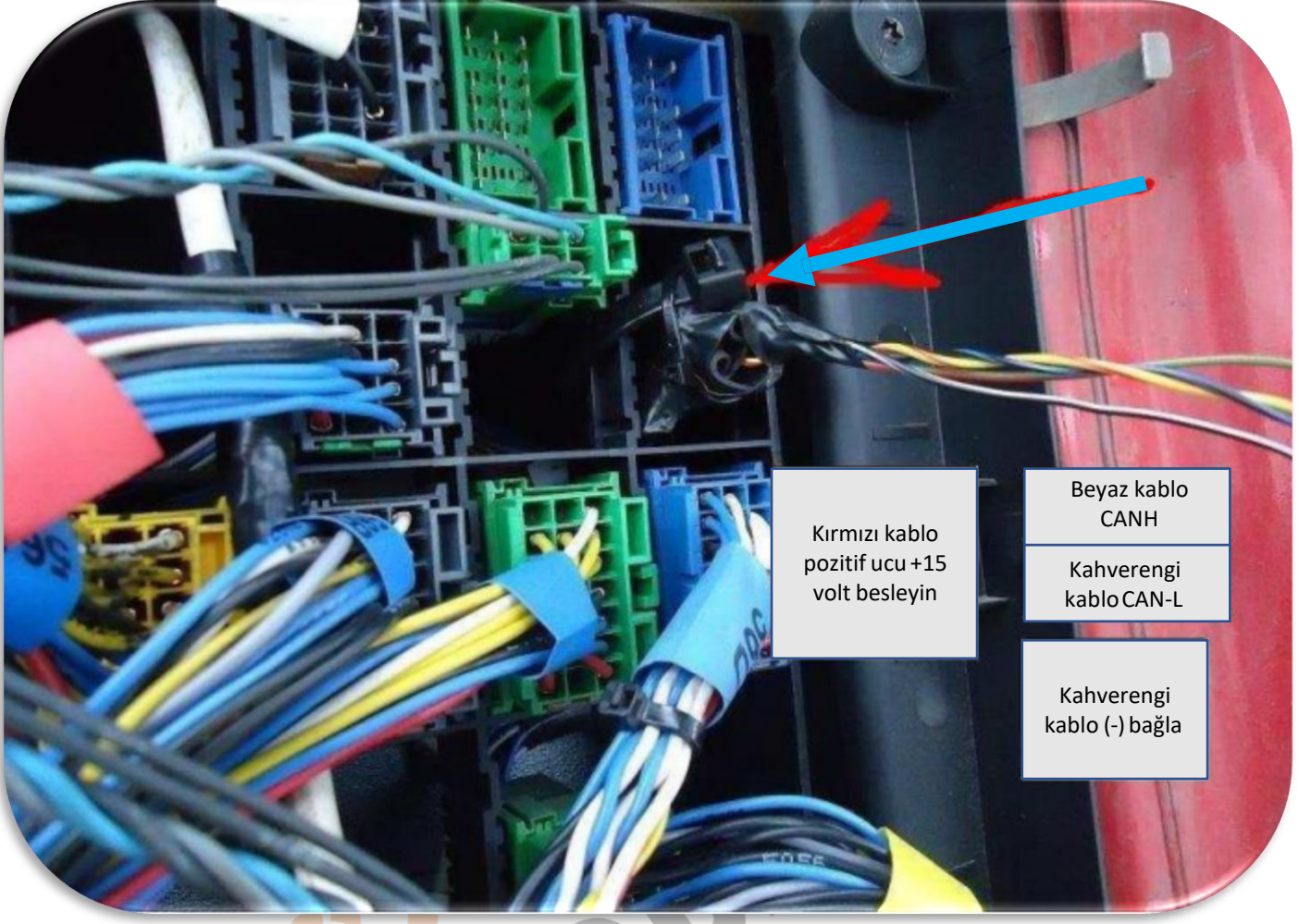
357 nolu
sigortayı
çıkar







Kıbrıs Elektronik

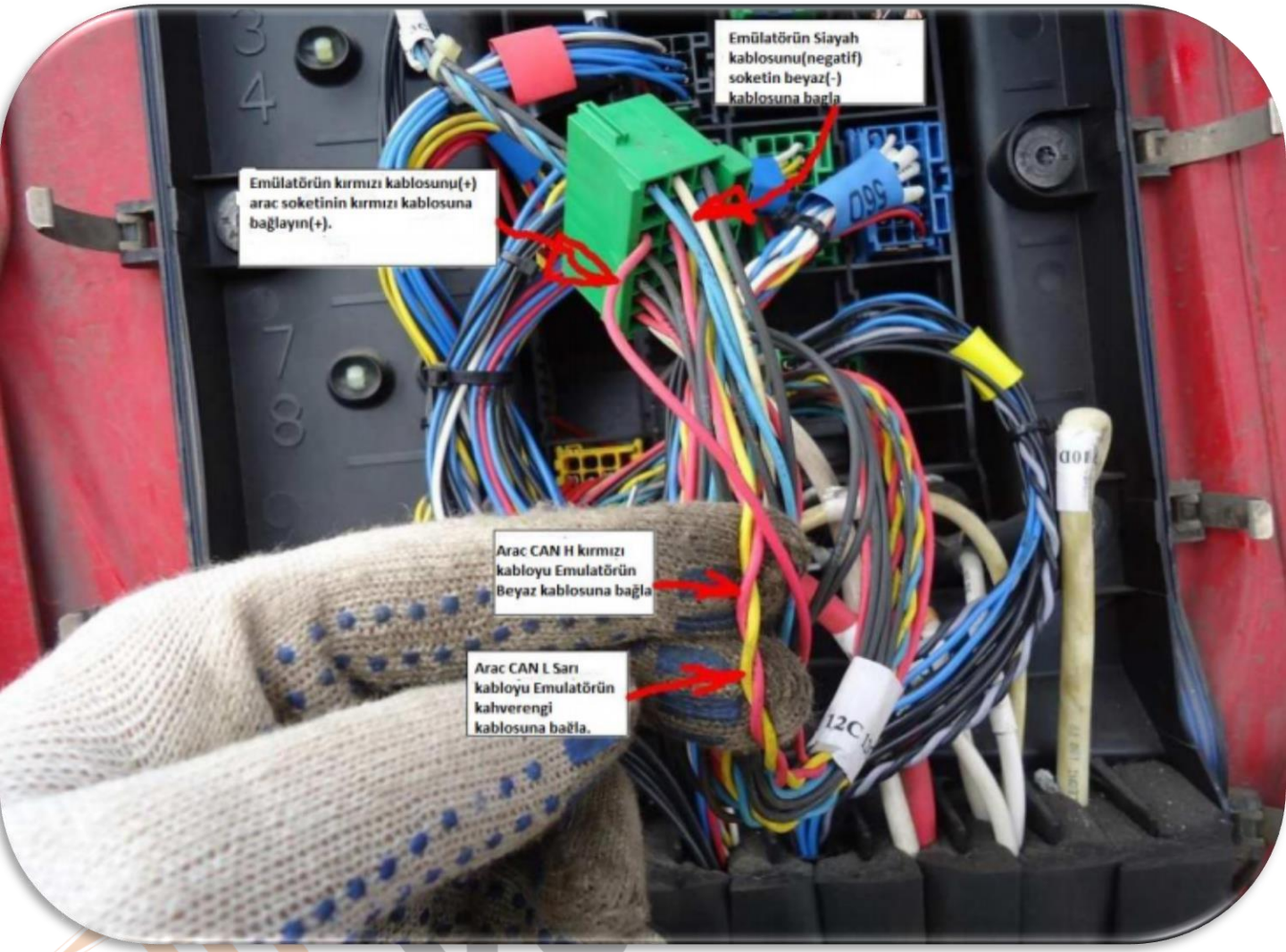


Kırmızı kablo
pozitif ucu +15
volt besleyin

Beyaz kablo
CANH

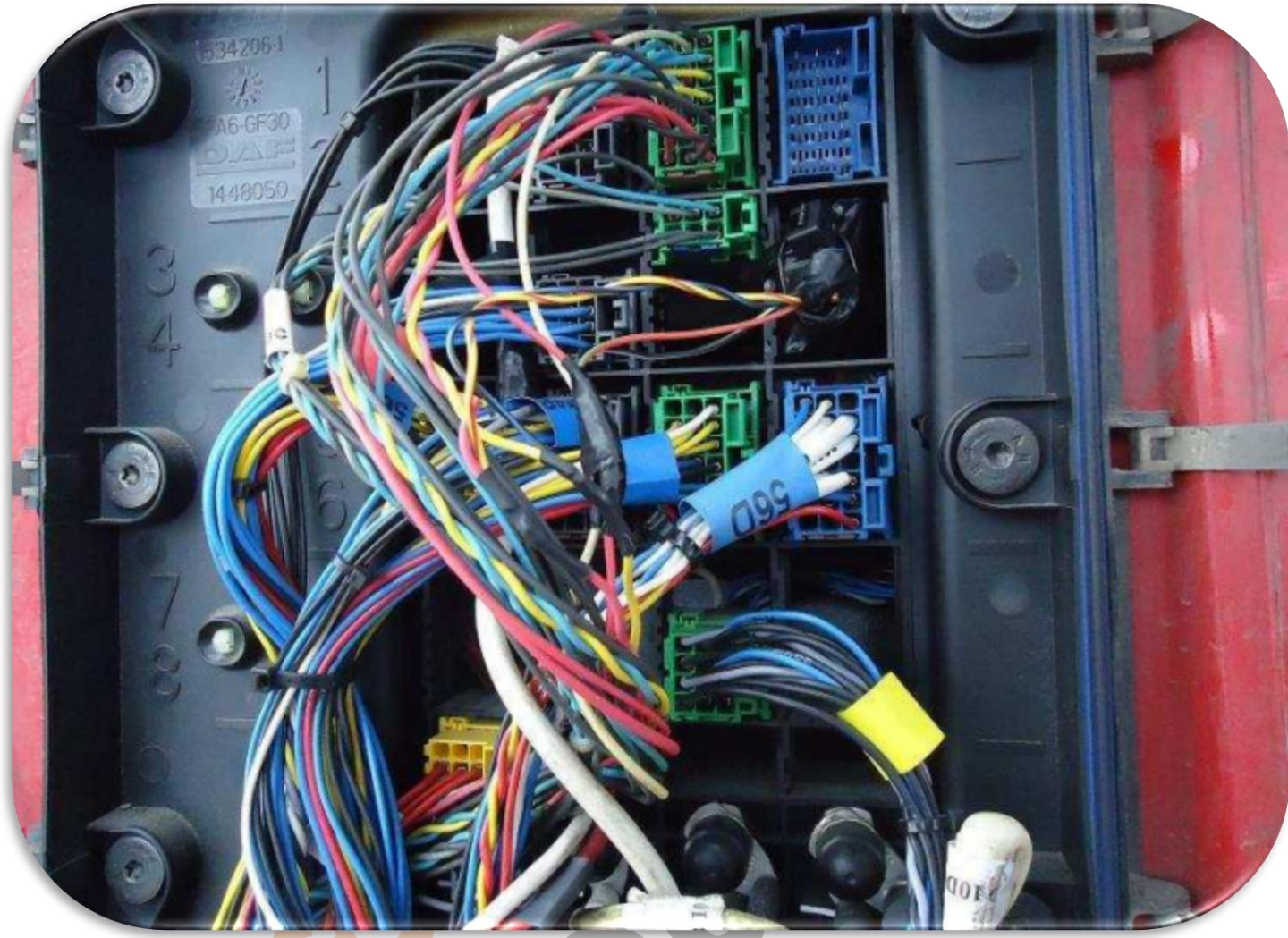
Kahverengi
kablo CAN-L

Kahverengi
kablo (-) bağla



Emülatörün SİYAH(-) kablosunu ⑦ Soketin BEYAZ(-) kablosuna bağla
Emülatörün kırmızı kablosunu(+) ⑦ araç soketinin kırmızı kablosuna(+) bağlayın.

Araç CAN-H KIRMIZI kabloyu ⑦ Emülatörün BEYAZ kablosuna bağla
Araç CAN-L SARI kabloyu ⑦ Emülatörün KAHVERENGİ Kablosuna bağla.



Adblue iptali emulatu montajından sonra DPF'yi kesinlikle iptal etmeniz gerekmektedir!

USER GUIDE

DAF Euro 5

9in-1 NOx Emulator

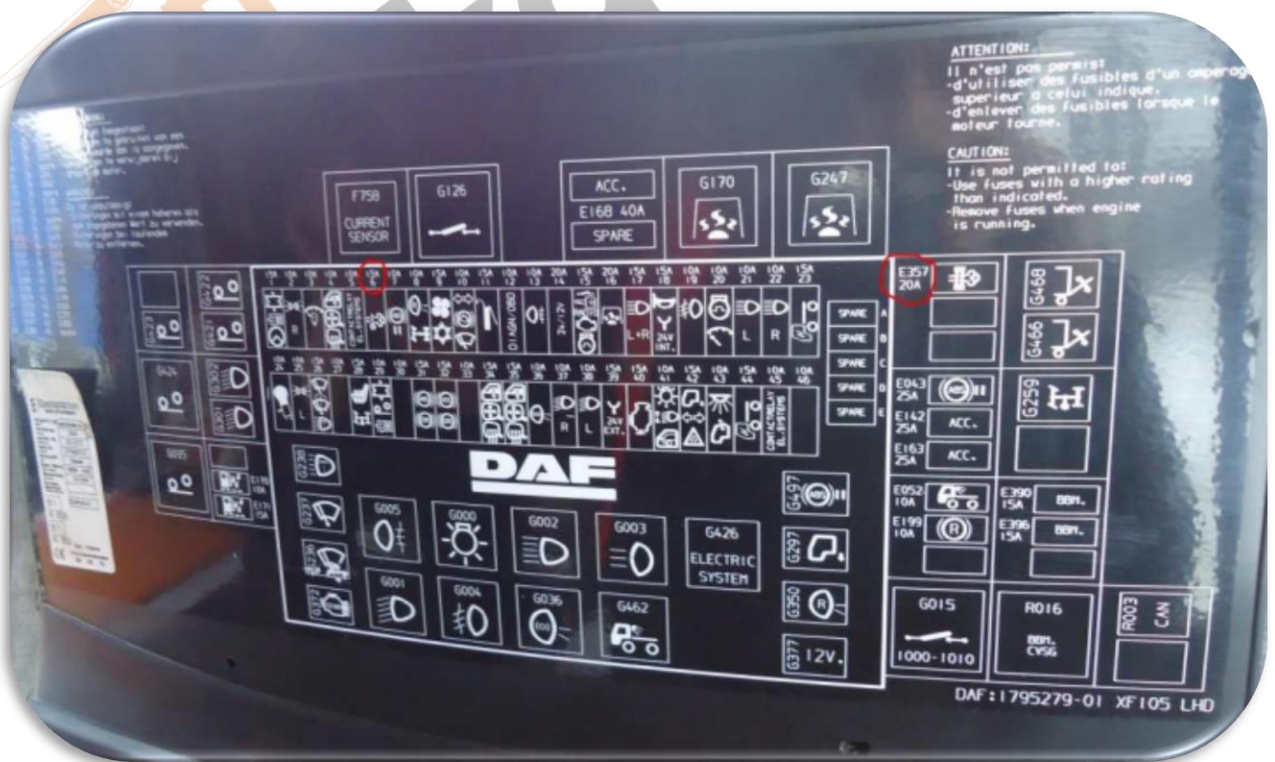
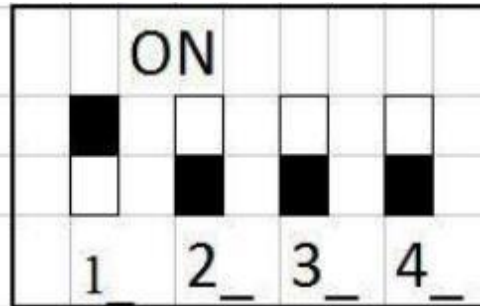


www.nitroibilisim.com.tr

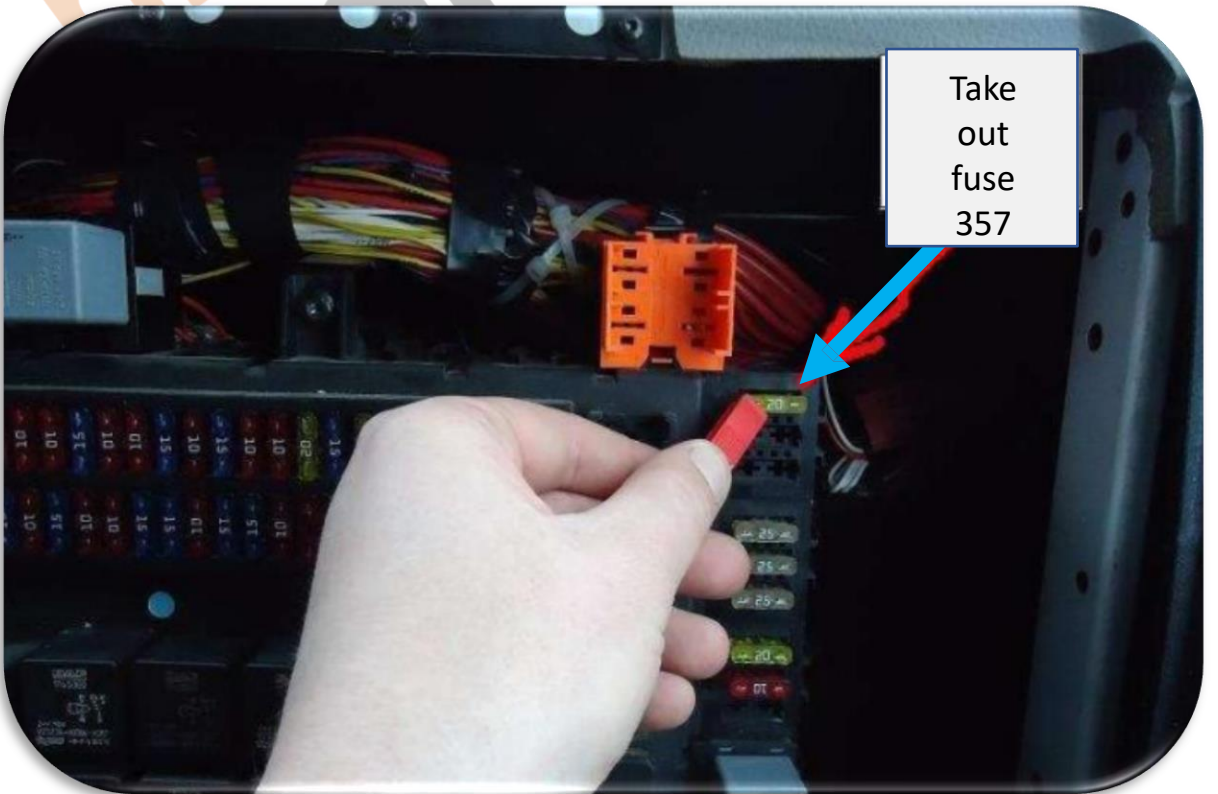
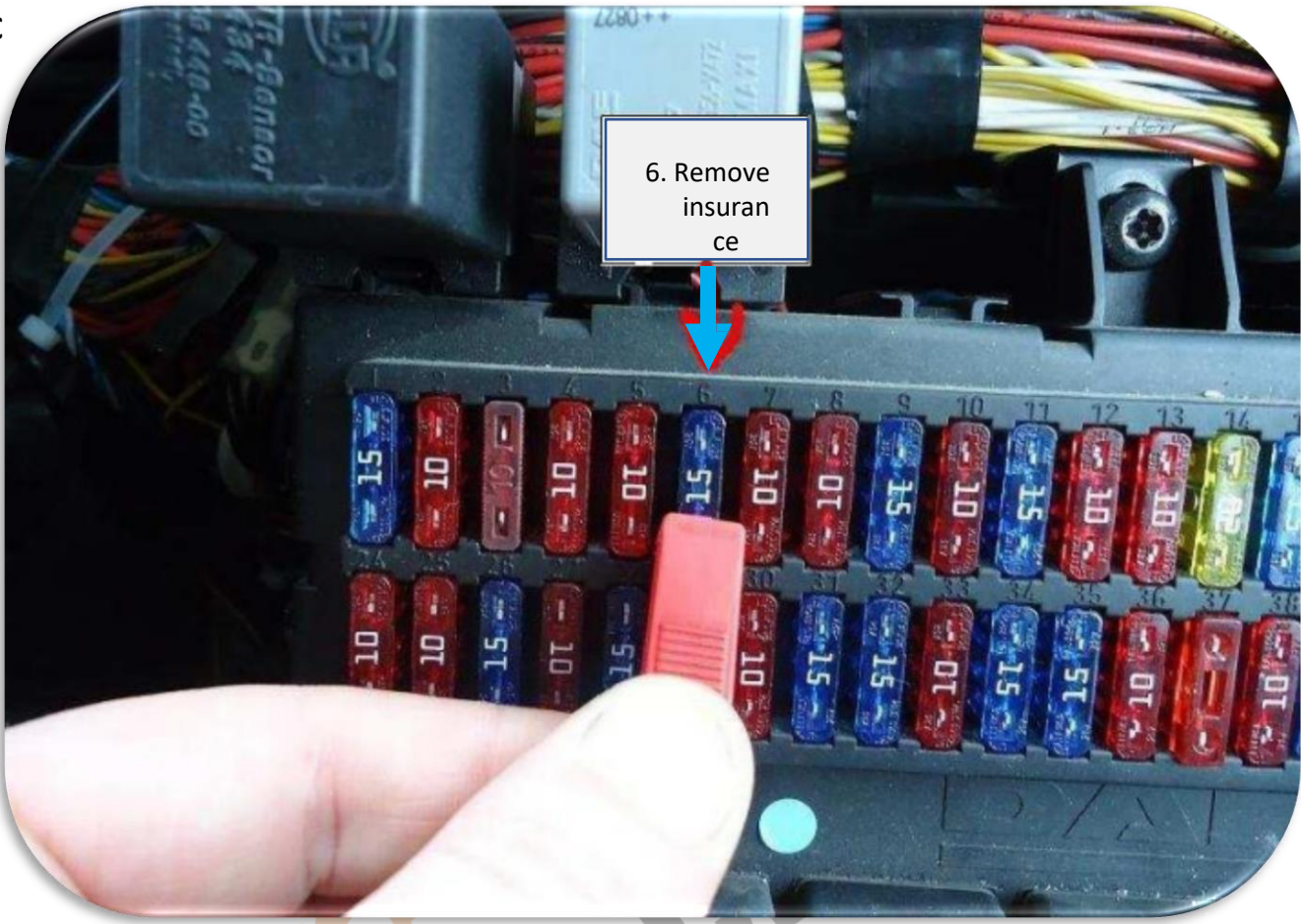
+0850 755 0230

DAF Euro 5 9in-1 NOx Emulator Connection Diagram

DAF



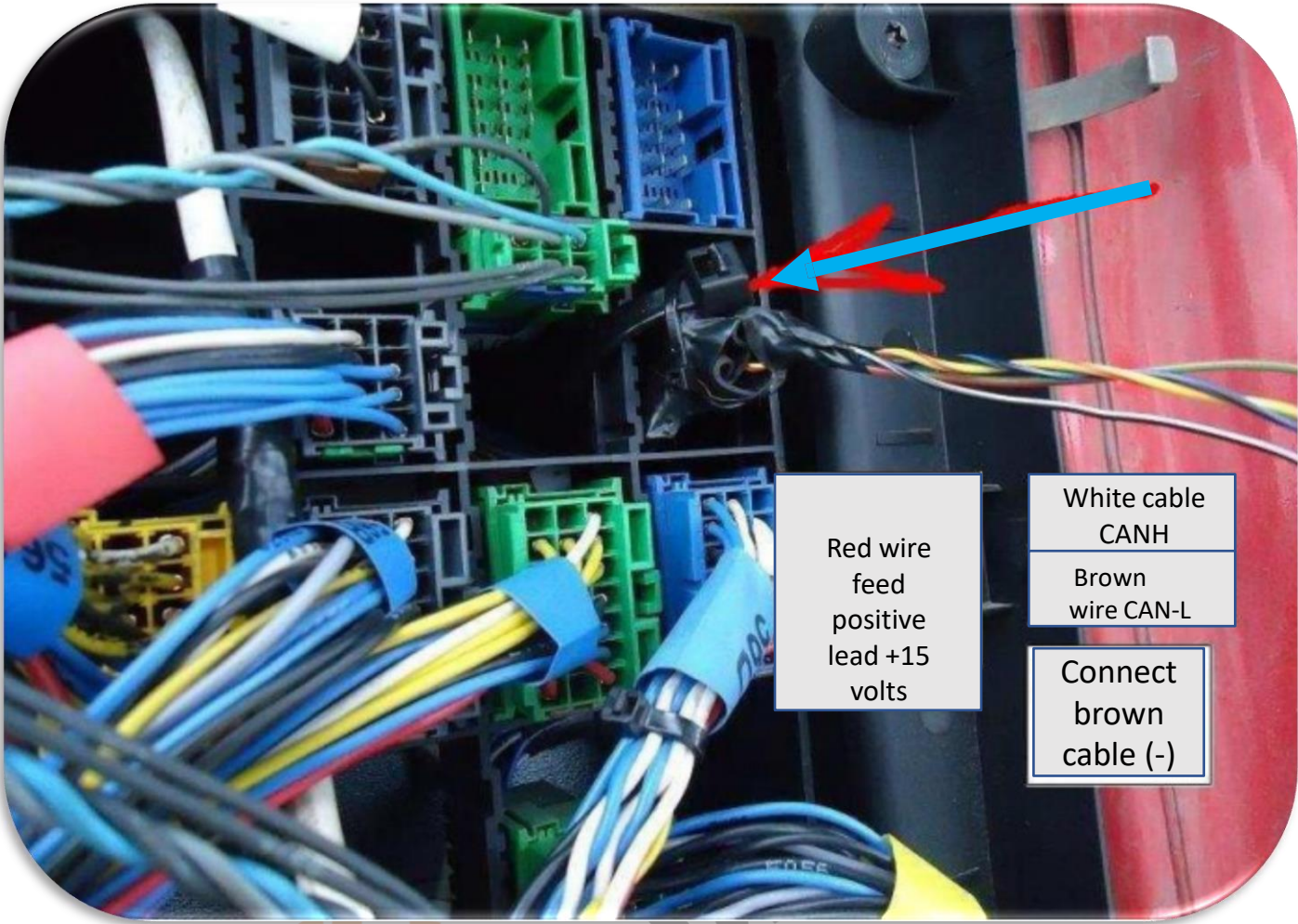
C







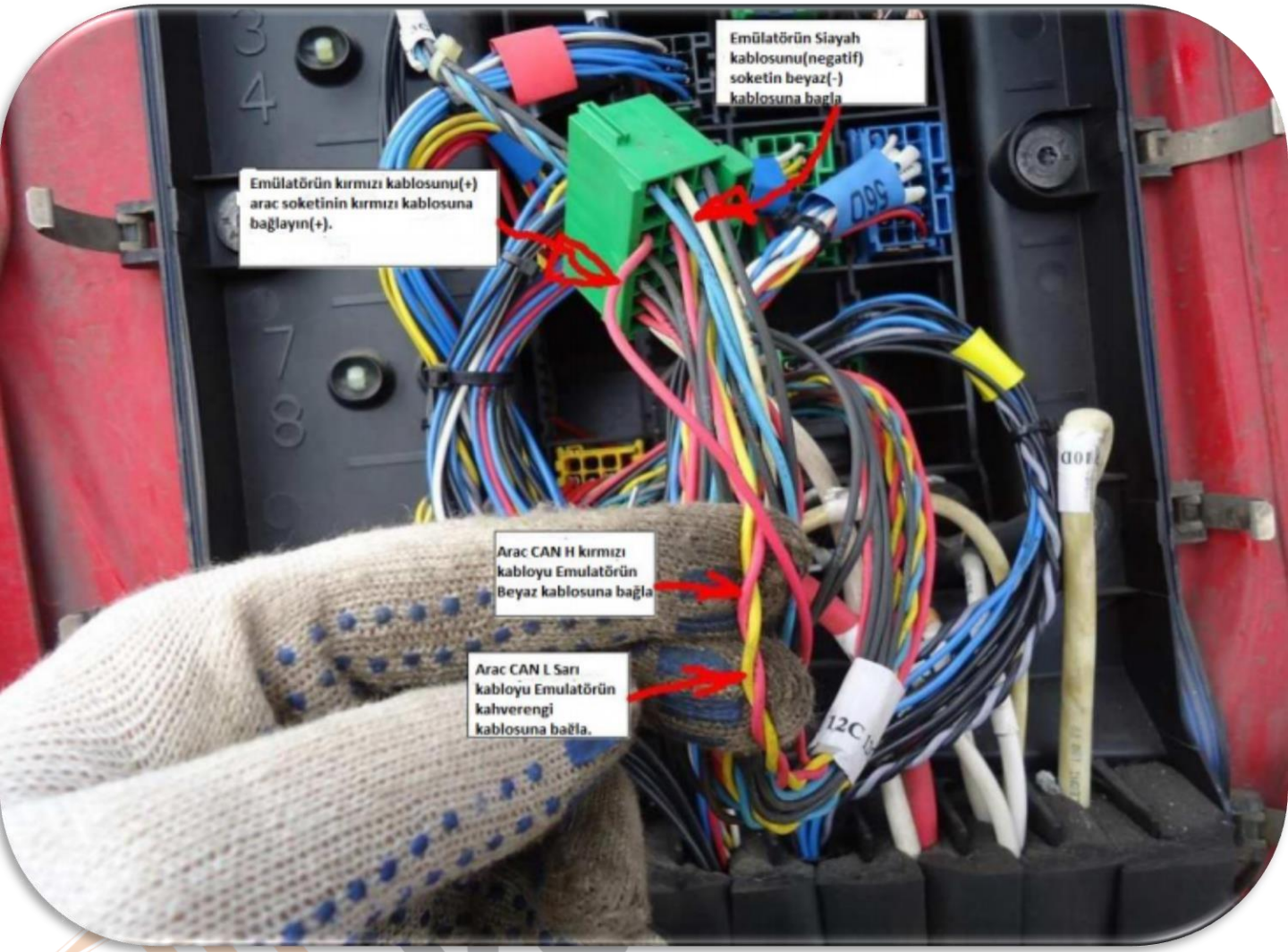
Elektronik



Red wire
feed
positive
lead +15
volts

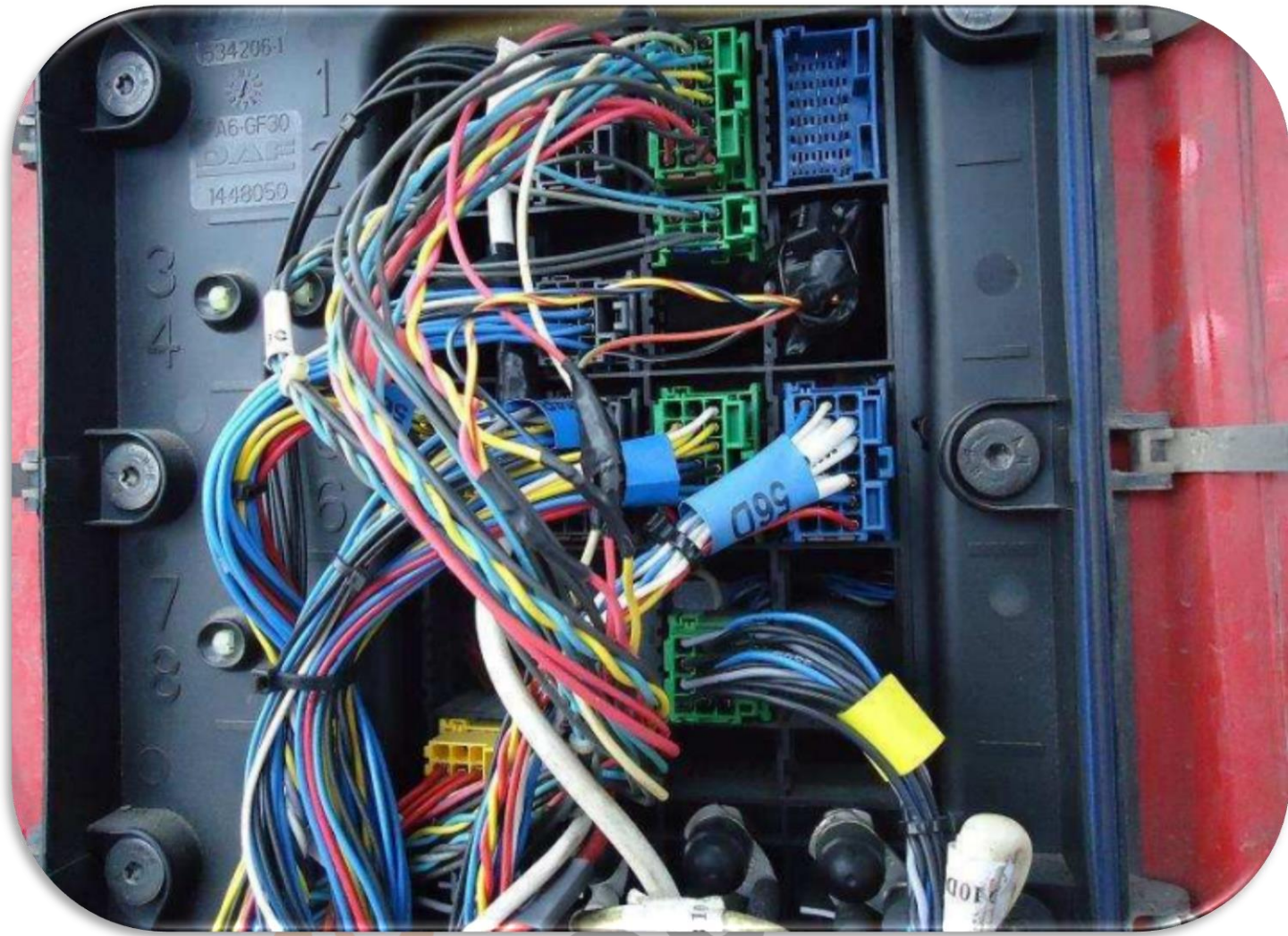
White cable
CANH
Brown
wire CAN-L

Connect
brown
cable (-)



Connect the BLACK (-) wire of the emulator → Connect to the WHITE (-) wire of the socket
Connect the red wire (+) of the emulator to the red wire (+) of the vehicle socket.

Connect the vehicle CAN-H RED wire → to the WHITE wire of the Emulator.
Connect the Vehicle CAN-L YELLOW wire → to the Emulator's BROWN Wire.



After installing the Adblue cancellation emulator, you should definitely cancel the DPF!