

# KULLANIM KILAVUZU

**DAF Euro 6**

**NOx Emülatör**



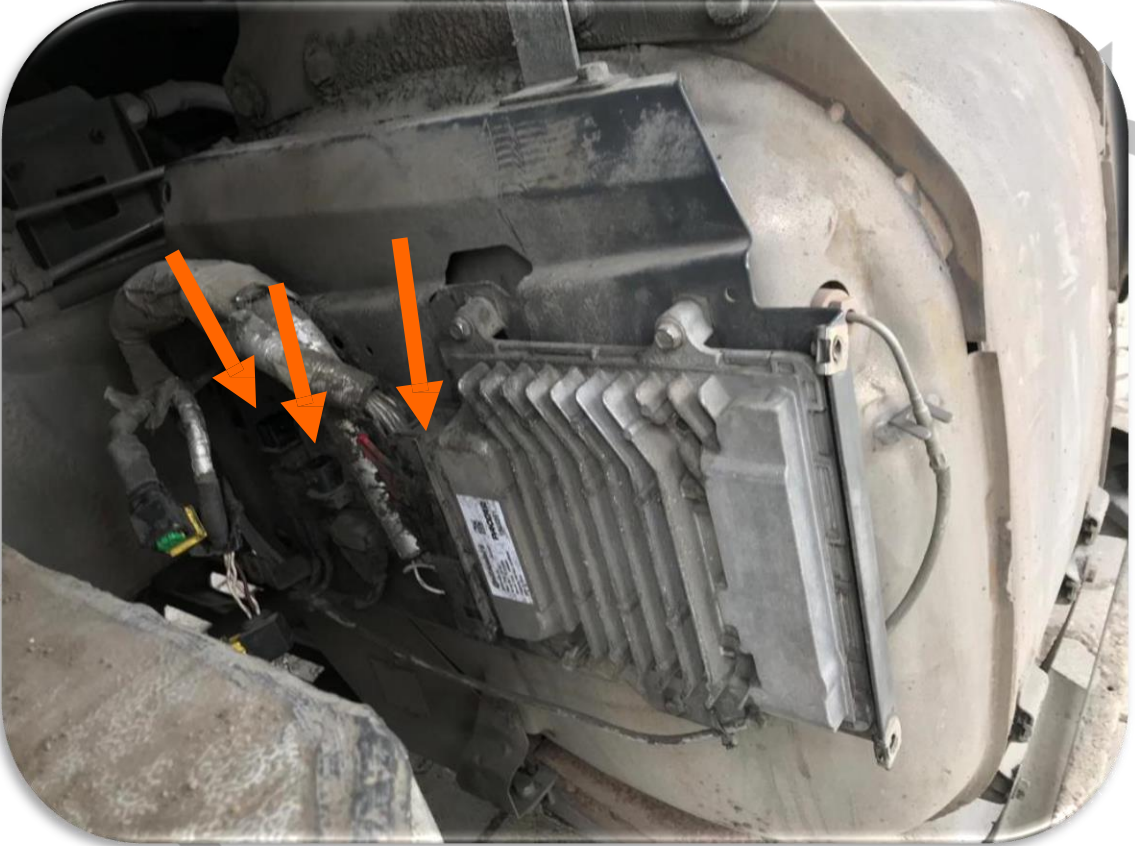
[www.nitrobilisim.com.tr](http://www.nitrobilisim.com.tr)

**+0850 755 0230**

# DAF Euro 6 NOx Emülatör Bağlantı Şeması

✓ Emülatörü susturucunun arkasına, EAS ECU'nun altına takmalısınız

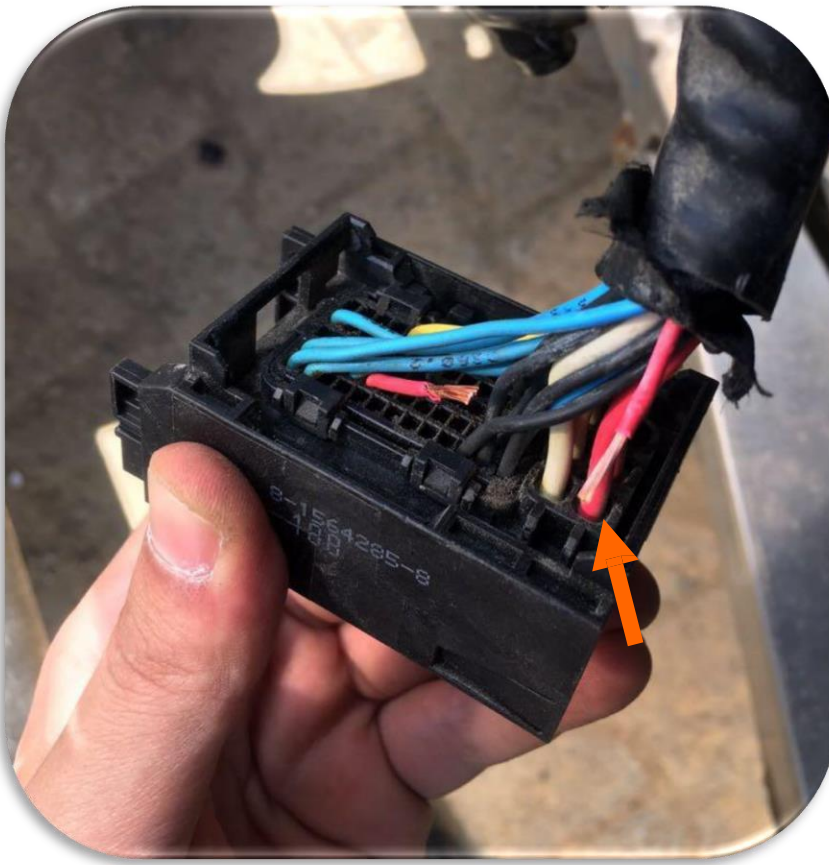
1. İlk önce kontağı kapatın. 2 adet NOx sensörünün ve EAS ECU'nun soketini sökmeniz gerekiyor.



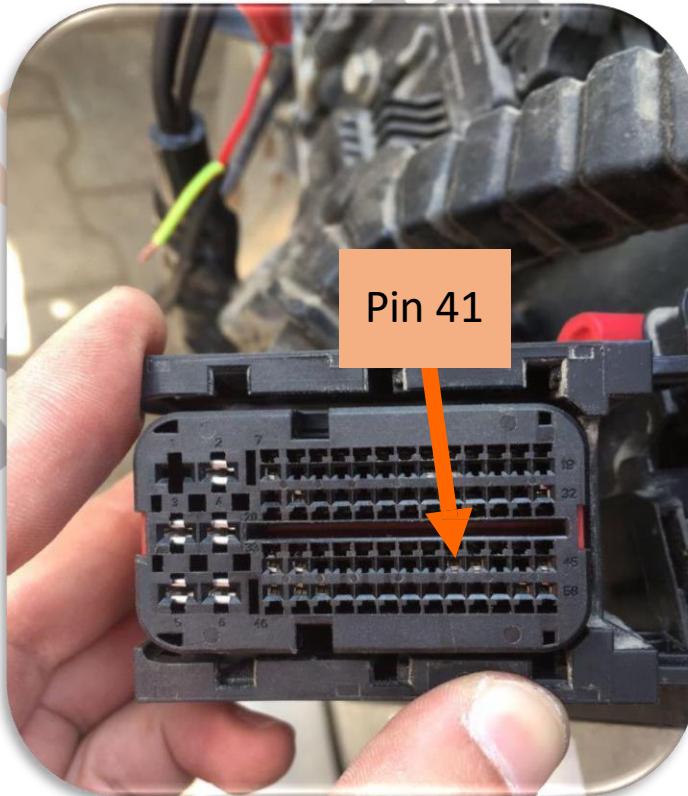


Şekilde gösterildiği gibi;

Beyaz kabloyu sol üst köşeye, kahverengi kabloyu beyaz kablonun altına, siyah kabloyu da sağ alt köşeye ister ön taraftan isterseniz arka taraftan bağlayınız.

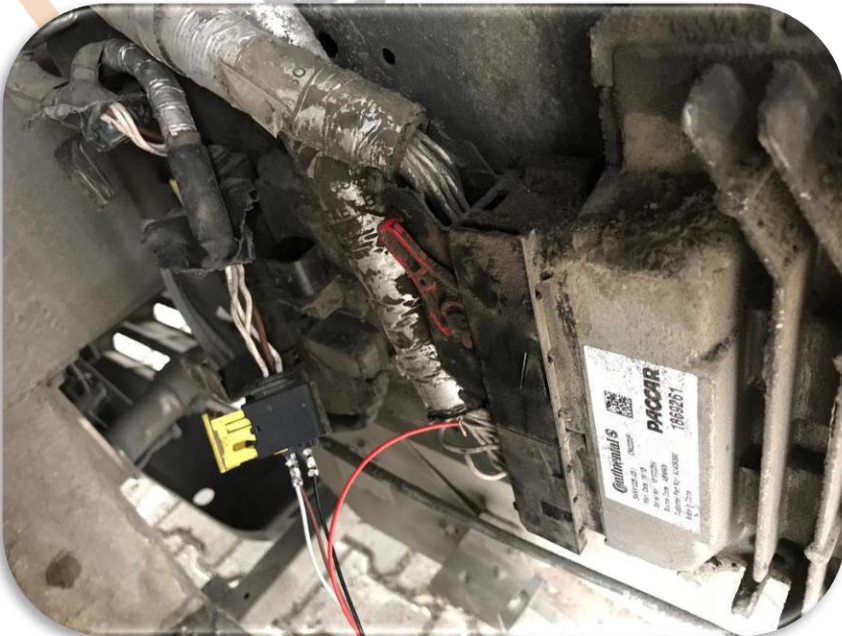


- Emülatördeki kırmızı kablomuzu araçtan gelen ince kırmızı kabloya (Pin 41'deki kablo) bağlayınız.





F22 sigortasını almalısınız(e497, 15A) 4. F24(E706, 5A) artık emülatörün sigortasıdır.



Sonuçta görmemiz gereken görsel şekildeki gibidir. Nox' lar çekilmiş ve emülatör bağlanmıştır.

# USER GUIDE

**DAF Euro 6**

**NOx Emulator**



[www.nitroibilisim.com.tr](http://www.nitroibilisim.com.tr)

+0850 755 0230

# DAF Euro 6 NOx Emulator Connection Diagram

✓ You must install the emulator behind the silencer, under the EAS ECU

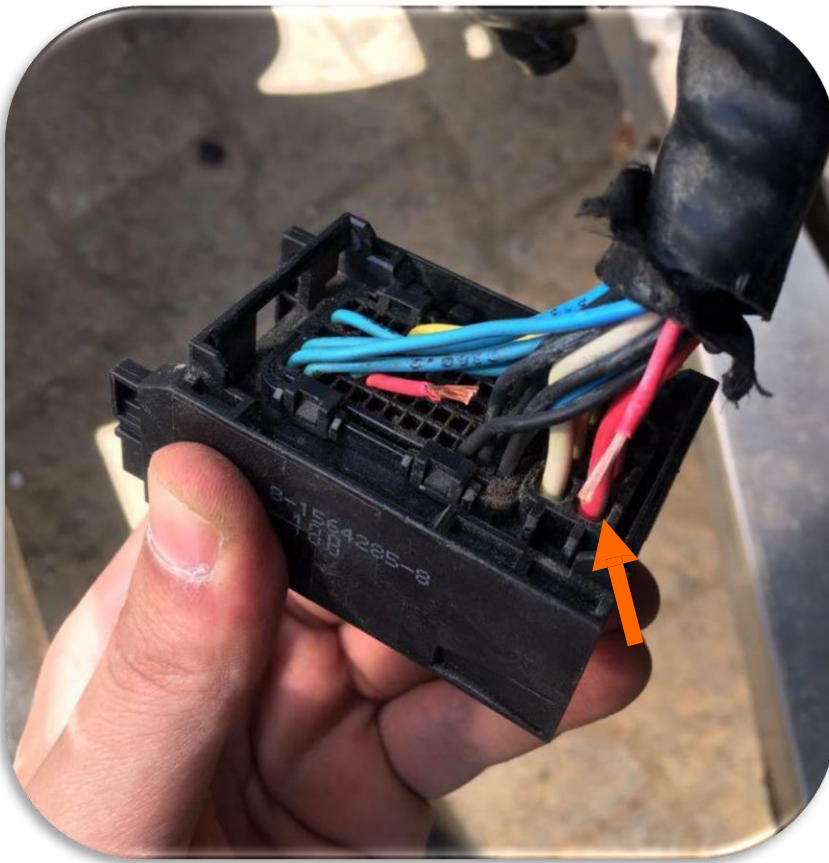
1. First turn off the ignition. You need to disconnect the socket of 2 NOx sensors and EAS ECU.



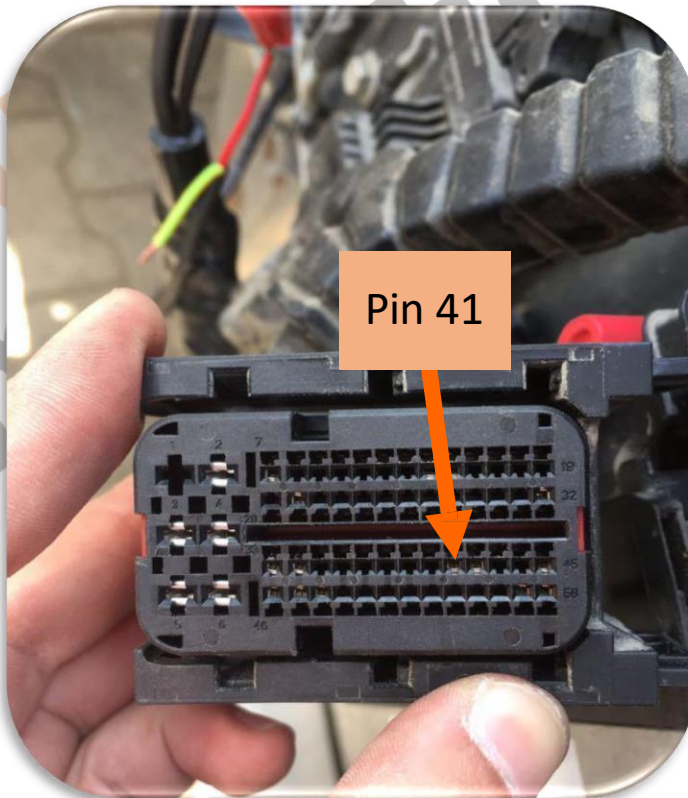


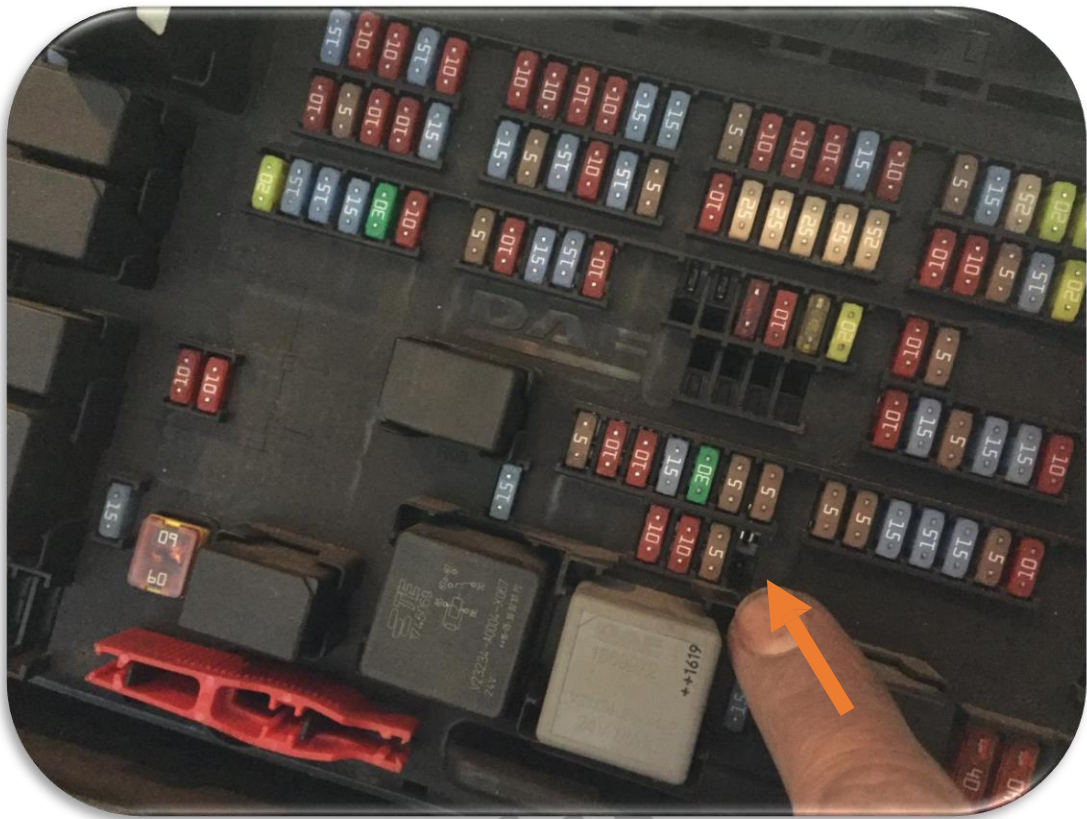
As shown in the figure;  
Connect the white cable to the upper left corner, the brown cable to the bottom of the white cable, and the black cable to the lower right corner, either from the front or from the back.



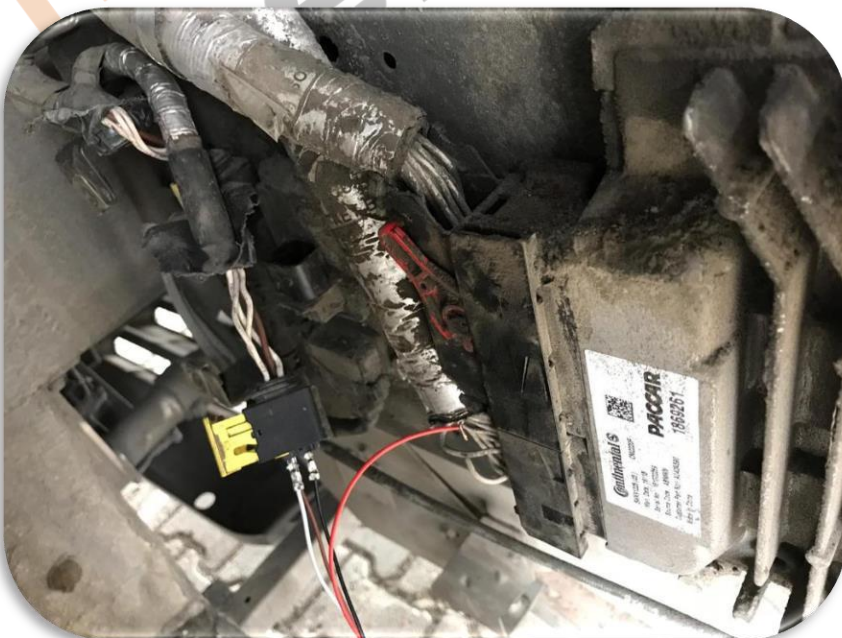


- Connect our red cable on the emulator to the thin red cable (cable on Pin 41) coming from the vehicle.





You should take the F22 fuse (e497, 15A) 4. F24 (E706, 5A) is now the fuse of the emulator.



The visual we should see the result is like in the figure.

Nox's were drawn and the emulator was connected.